

TRM 691

Experience™ Series

TREADMILL

Product Features

1. P94 Touchscreen Console

The P94 console offers a brilliant 22-inch touchscreen that provides the best blend of performance, fitness, and entertainment that your exercisers expect. It's designed to deliver a best-in-class content suite with engaging workouts, wireless casting with access to thousands of third-party workout and media apps, and integrated Pluto TV, so exercisers always have the content they want, right at their fingertips.

2. Commercial-Grade Drive and Lift Motor

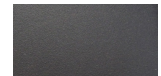
The TRM 691 is equipped with a commercial-grade 3 HP high-efficiency AC-motor drive (4.3 HP peak) that enhances performance, efficiency, and reliability to deliver a treadmill that is ideal for dues-paying commercial fitness facilities as well as hospitality venues, multi-family housing complexes, corporations and municipal service organizations.

3. Integrated Footplant Technology™

Recognizes the exerciser's natural foot speed and matches every stride for an ultra-smooth feel that enhances their workout experience.

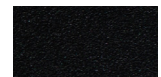
4. Ground Effects® Impact Control System

Our patented system combines ideal cushioning, support, and stability for exercisers. Precor decks are designed to provide more absorption in the front where the exerciser's feet hit the belt and added rigidity at the back for a firm push-off.



Storm Grey

Refined colorways with dark Tungsten covers and two frame color options, Storm Grey and Black Pearl.



Black Pearl

Specifications

Dimensions (L x W x H): 83 x 35 x 70 in / 211 x 89 x 178 cm

Product Weight: 392 lb / 179 kg

Step-up Height: 8.4 in / 21.3 cm

Handrail Length: 18 in / 46 cm

Running Surface: 60 x 22 in / 152 x 56 cm

Power: 120 volt, 20 amp individual branch circuit

Total Workouts: 27

Elevation Range: 0% to 15% incline in 0.5% increments

Speed Range: 0.5 - 12 mph / 0.8 - 19.2 km/h

Motor Drive: 3 HP high-efficiency AC-motor (4.3 HP peak)

Languages: English, Danish, Dutch, French, Finnish, German, Italian, Japanese, Korean, Norwegian, Polish, Portuguese, Russian, Simplified Chinese, Spanish, Swedish, Traditional Chinese, Turkish

Console Features: 22 in / 55.8 cm LCD Capacitive Touchscreen with wireless charging, audio jack, and Bluetooth® headphones

Accessories: Integrated Reading Rack
Optional - Cable Management

Warranty: Visit www.precor.com for warranty terms.

TRM 681

Experience™ Series

TREADMILL

Product Features

1. P84 Touchscreen Console

The P84 console offers a brilliant 16-inch touchscreen that provides the best blend of performance, fitness, and entertainment that your exercisers expect. It's designed to deliver a best-in-class content suite with engaging workouts, wireless casting with access to thousands of third-party workout and media apps, and integrated Pluto TV, so exercisers always have the content they want, right at their fingertips.

2. Commercial-Grade Drive and Lift Motor

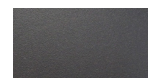
The TRM 681 is equipped with a commercial-grade 3 HP high-efficiency AC-motor drive (4.3 HP peak) that enhances performance, efficiency, and reliability to deliver a treadmill that is ideal for dues-paying commercial fitness facilities as well as hospitality venues, multi-family housing complexes, corporations and municipal service organizations.

3. Integrated Footplant Technology™

Recognizes the exerciser's natural foot speed and matches every stride for an ultra-smooth feel that enhances their workout experience.

4. Ground Effects® Impact Control System

Our patented system combines ideal cushioning, support, and stability for exercisers. Precor decks are designed to provide more absorption in the front where the exerciser's feet hit the belt and added rigidity at the back for a firm push-off.



Storm Grey

Refined colorways with dark Tungsten covers and two frame color options, Storm Grey and Black Pearl.



Black Pearl

Specifications

Dimensions (L x W x H): 83 x 35 x 68 in / 211 x 89 x 173 cm

Product Weight: 392 lb / 179 kg

Step-up Height: 8.4 in / 21.3 cm

Handrail Length: 18 in / 46 cm

Running Surface: 60 x 22 in / 152 x 56 cm

Power: 120 volt, 20 amp individual branch circuit

Total Workouts: 27

Elevation Range: 0% to 15% incline in 0.5% increments

Speed Range: 0.5 - 12 mph / 0.8 - 19.2 km/h

Motor Drive: 3 HP high-efficiency AC-motor (4.3 HP peak)

Languages: English, Danish, Dutch, French, Finnish, German, Italian, Japanese, Korean, Norwegian, Polish, Portuguese, Russian, Simplified Chinese, Spanish, Swedish, Traditional Chinese, Turkish

Console Features: 16 in / 40.6 cm LCD Capacitive Touchscreen with wireless charging, audio jack, and Bluetooth® headphones

Accessories: Integrated Reading Rack
Optional - Cable Management

Warranty: Visit www.precor.com for warranty terms.

TRM 681

Experience™ Series

TREADMILL

Product Features

1. P82 Touchscreen Console Connects to Apple Watch*

The P82 console offers a brilliant 15 inch screen that's ergonomically positioned to deliver crystal clear entertainment viewing for exercisers in motion. When networked, it is also a direct-to-exerciser communication portal allowing you an opportunity to build your brand, share information about activities and services, and strengthen the sense of community within your facility. Available with the optional Precor Smart Watch Connector for Apple Watch®.

2. Commercial-Grade Drive and Lift Motor

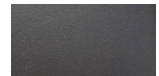
The TRM 681 is equipped with a commercial-grade 3 HP high-efficiency AC-motor drive (4.3 HP peak) that enhances performance, efficiency, and reliability to deliver a treadmill that is ideal for dues-paying commercial fitness facilities as well as hospitality venues, multi-family housing complexes, corporations and municipal service organizations.

3. Integrated Footplant Technology™

Recognizes the exerciser's natural foot speed and matches every stride for an ultra-smooth feel that enhances their workout experience.

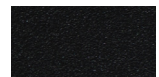
4. Ground Effects® Impact Control System

Our patented system combines ideal cushioning, support, and stability for exercisers. Precor decks are designed to provide more absorption in the front where the exerciser's feet hit the belt and added rigidity at the back for a firm push-off.



Storm Grey

Refined colorways with dark Tungsten covers and two frame color options, Storm Grey and Black Pearl.



Black Pearl

Specifications

Dimensions (L x W x H): 83 x 35 x 62 in / 211 x 89 x 157.5 cm

Product Weight: 392 lb / 179 kg

Step-up Height: 8.4 in / 21.3 cm

Handrail Length: 18 in / 46 cm

Running Surface: 60 x 22 in / 152 x 56 cm

Power: 120 volt, 20 amp individual branch circuit

Total Workouts: 27

Elevation Range: 0% to 15% incline in 0.5% increments

Speed Range: 0.5 - 12 mph / 0.8 - 19.2 km/h

Motor Drive: 3 HP high-efficiency AC-motor (4.3 HP peak)

Languages: English, Danish, Dutch, French, Finnish, German, Italian, Japanese, Korean, Norwegian, Polish, Portuguese, Russian, Simplified Chinese, Spanish, Swedish, Traditional Chinese, Turkish



Apple Watch is a trademark of Apple Inc., registered in the U.S. and other countries and regions.

Console Features: 15 in / 38.1 cm LCD Capacitive Touch Screen with mobile device charger, audio jack and optional Smart Watch Connector for Apple Watch®

Network Capabilities: Preva® network capable

Accessories: Integrated Reading Rack
Optional - Cable Management

Warranty: Visit www.precor.com for warranty terms.

TRM 661

Experience™ Series

TREADMILL

Product Features

1. P62 Console

The P62 console features personalized viewing and the remarkable clarity of TV and internet options that exercisers crave, all in a 10.1 in / 25.7 cm screen. With the ability to “favorite” selections for future use, exercisers can customize their workout experience based on what’s important to them.

2. Commercial-Grade Drive and Lift Motor

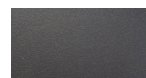
The TRM 661 is equipped with a commercial-grade 3 HP high-efficiency AC-motor drive (4.3 HP peak) that enhances performance, efficiency, and reliability to deliver a treadmill that is ideal for fitness facilities located in multi-family housing complexes, corporations, small municipal service organizations, and many hospitality venues.

3. Integrated Footplant Technology™

Recognizes the exerciser’s natural foot speed and matches every stride for an ultra-smooth feel that enhances their workout experience.

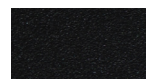
4. Ground Effects® Impact Control System

Our patented system combines ideal cushioning, support, and stability for exercisers. Precor decks are designed to provide more absorption in the front where the exerciser’s feet hit the belt and added rigidity at the back for a firm push-off.



Storm Grey

Refined colorways with dark Tungsten covers and two frame color options, Storm Grey and Black Pearl.



Black Pearl

Specifications

Dimensions (L x W x H): 83 x 35 x 62 in / 211 x 89 x 157.5 cm

Product Weight: 389 lb / 176 kg

Step-up Height: 8.4 in / 21.3 cm

Handrail Length: 18 in / 46 cm

Running Surface: 60 x 22 in / 152 x 56 cm

Power: 120 volt, 20 amp individual branch circuit

Total Workouts: 27

Elevation Range: 0% to 15% incline in 0.5% increments

Speed Range: 0.5 - 12 mph / 0.8 - 19.2 km/h

Motor Drive: 3 HP high-efficiency AC-motor (4.3 HP peak)

Languages: English, Danish, Dutch, French, Finnish, German, Italian, Japanese, Korean, Norwegian, Polish, Portuguese, Russian, Simplified Chinese, Spanish, Swedish, Traditional Chinese, Turkish

Network Capabilities: Preva® network capable

Entertainment: 10.1 in / 25.7 cm LCD Capacitive Touchscreen
Mobile Device Charger and Audio Jack

Accessories: Integrated Reading Rack
Optional - Cable Management

Warranty: Visit www.precor.com for warranty terms.

TRM 631

Experience™ Series

TREADMILL

Product Features

1. P31 Console

Finally, an LED console that works harder for you, your servicers, and your exercisers. Get integrated asset management to supercharge your service techs with extra information, right at their fingertips. Exercisers will enjoy the well-placed channel or volume change controls. The black color on the P31 looks great across the full range of Precor cardio equipment.

2. Commercial-Grade Drive and Lift Motor

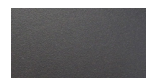
The TRM 631 is equipped with a commercial-grade 3 HP high-efficiency AC-motor drive (4.3 HP peak) that enhances performance, efficiency, and reliability to deliver a treadmill that is ideal for dues-paying commercial fitness facilities as well as hospitality venues, multi-family housing complexes, corporations and municipal service organizations.

3. Integrated Footplant Technology™

Recognizes the exerciser's natural foot speed and matches every stride for an ultra-smooth feel that enhances their workout experience.

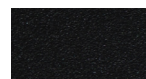
4. Ground Effects® Impact Control System

Our patented system combines ideal cushioning, support, and stability for exercisers. Precor decks are designed to provide more absorption in the front where the exercisers' feet hit the belt and added rigidity at the back for a firm push-off.



Storm Grey

Refined colorways with dark Tungsten covers and two frame color options, Storm Grey and Black Pearl.



Black Pearl

Specifications

Dimensions (L x W x H): 83 x 35 x 62 in / 211 x 89 x 157.5 cm

Product Weight: 385 lb / 175 kg

Step-up Height: 8.4 in / 21.3 cm

Handrail Length: 18 in / 46 cm

Running Surface: 60 x 22 in / 152 x 56 cm

Power: 120 volt, 20 amp individual branch circuit

Total Workouts: 27

Elevation Range: 0% to 15% incline in 0.5% increments

Speed Range: 0.5 - 12 mph / 0.8 - 19.2 km/h

Motor Drive: 3 HP high-efficiency AC-motor (4.3 HP peak)

Languages: English, French, German, Hebrew, Italian, Japanese, Portuguese, Russian, Spanish

Network Capabilities: C-SAFE enabled
Mobile Device Charger - Standard

Entertainment: Optional - 15.6 in / 39.6 cm Personal Viewing System (PVS)

Accessories: Integrated Reading Rack
Optional - Cable Management

Warranty: Visit www.precor.com for warranty terms.